



# GUNDLACH BUNDSCHU

EST. 1858

*Founded in 1858, Gundlach Bundschu is a family-owned, sixth-generation winery, producing distinctive estate wines of site-specific character. The winery's 320-acre estate vineyard, christened Rhinefarm in 1858, is 8 miles from San Pablo Bay, at the eastern edge of both the Sonoma Valley & Sonoma Coast AVAs.*



## 2010 GEWÜRZTRAMINER, ESTATE VINEYARD, SONOMA COAST

- 11 acres Martini selection vines planted 1969, harvested in 2 lots;
- 11 acres clone 47 vines planted 2005, harvested in 3 lots
- 3.5 tons per acre
- Whole cluster press, cold settled.
- 20% grapes frozen 48 hours, thawed, then whole cluster pressed for richness and texture.
- 90% stainless steel fermented; 10% neutral oak
- Fermented to completion - 0% residual sugar
- Orange blossom, white floral & coriander aromas. Flavors of ruby grapefruit, fresh lychee, kiwi fruit and meyer lemon with notes of warm spice. Dry, vibrant finish drenched in fresh, bright fruit.
- 14.4% alc by vol, 3.48 pH
- 2,250 cases produced; \$22.50 suggested retail price

*Intensely aromatic, classic dry style, crisp yet lush and complex. Ideally suited for on premise accounts with dynamic alternative white lists, seafood & Asian cuisines.*

*“One of the top Gewürztraminers in the state annually.”*

Dan Berger's Vintage Experiences

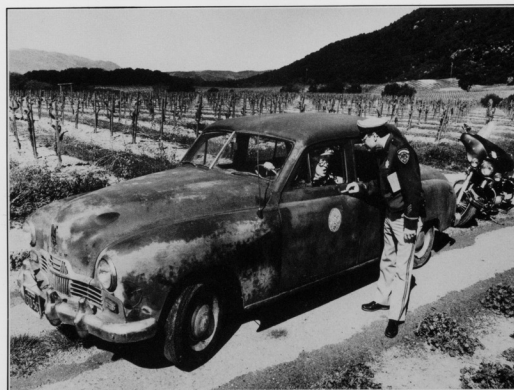
*“One of my favorites.”*

Leslie Sbrocco

*“This might be the first time this has been said on a rock and roll stage, but can I get some gewürztraminer up here?”*

Eric Johnson, lead singer of The Fruit Bats  
Huichica Music Festival June 2010

SONOMA VALLEY SOBRIETY TEST #1



If you can't say  
“Gundlach-Bundschu Gewürztraminer”  
you shouldn't be driving!

